



Fujitsu Training Academy

2015 Schedule

TRC Sales Training Center—Garden Grove, CA

Fujitsu Training Academy courses are designed to provide an in-depth look at design, layout, installation, planning and servicing Fujitsu HVAC systems. They provide technical material for installation planning and maintenance as well as hands on service and troubleshooting tips and techniques for experienced installation and Service Technicians.

COURSES AVAILABLE:

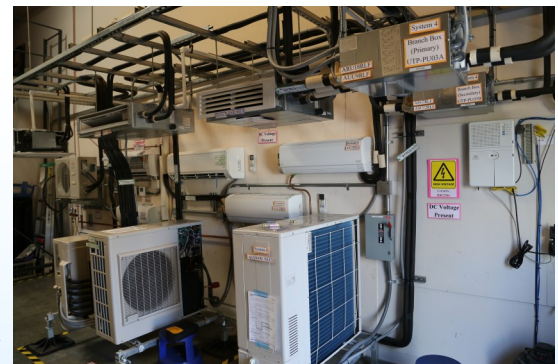
FIT (Fujitsu Inverter Technology)

This class focuses on tradition Halcyon Inverter systems as well as our new Halcyon HFI Multi systems (not FLEX 4 ton system). Students will receive training on proper installation techniques, DC variable speed technology, with hands on troubleshooting lab sessions to troubleshooting system problems and fault codes, testing circuit boards for indoor and outdoor units using multi-meters on operational up-to-date equipment. (prerequisite 8hr. FAST)



HFIT (Hybrid Fujitsu Inverter Technology)

HFIT is a course providing technical training on the 4 ton Halcyon HFI FLEX 2-8 zone system. This system has some new and unique features expanding our existing inverter technology to cover a wide range of applications never before possible with a single mini-split system. The course covers application, sizing, pipe layout, equipment location and installation of indoor and outdoor units. Additionally, attendees will get to work with operating equipment in hands on lab sessions while



2015 Fujitsu Training Academy Schedule			
FIT		HFIT	

WHO SHOULD ATTEND?

Fujitsu Training Academy course are for Sales Reps, Contractors, Distributors, Architects and Engineers who need more experience planning, selling and installing Fujitsu systems and would like to take their design, service and installation training to the next level. In order to attend Fujitsu Training Academy

To register, contact your local distributor.





Students participate in hands-on training with working Fujitsu systems.

NATE CREDITS

Fujitsu Training Academy courses are NATE recognized! NATE contractors who complete qualified courses will received Continuing Education Credits for attending the 8-hour Fujitsu Training Academy training courses. Contractors must provide their NATE I.D. and sign in on the official NATE sign-in sheet in the classroom.



CLASS FORMAT

Classes are from 7:30 AM to 5:00 PM and have limited availability depending on the course. Hands on classes have smaller class sizes, allowing instructions to answer questions and address student needs. Our goal is that after attending these trainings, you will feel confident designing, planning, selling, installing and servicing Fujitsu HVAC systems.



CONTRACTOR'S COST

Non-Local Students
 1 day training fee = **\$575**
 2 day training fee = **\$862** (2nd day 1/2 price)

Local Students
 1 day training fee = **\$322**
 2 day training fee = **\$483** (2nd day 1/2 price)
 *Certain transportation & lodging included

*For complete details please review the Registration packet



TESTING & CERTIFICATION

Following each course, attendees will be tested to check comprehension and retention of the course material. Test are corrected and reviewed in full with the class to ensure proper understanding. Passing students will receive a certificate of completion. Fujitsu Training Academy training courses may provide up to 5 points on the Dealer Toolbox based on registration and grade achieved. Fujitsu Training Academy courses can provide up to 5 points on the Dealer Toolbox.



Small class sizes allow students to received individual attention.